

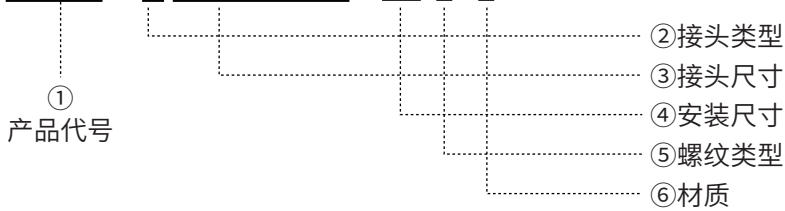
吸盘接头



成品订购编码释义

例:

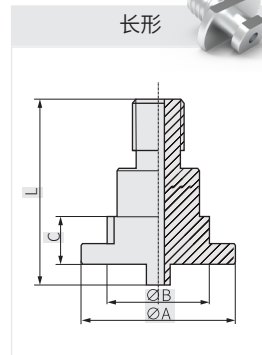
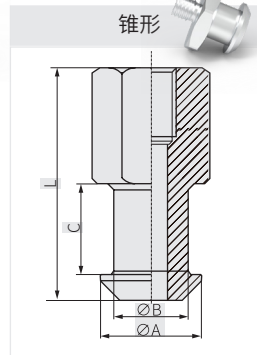
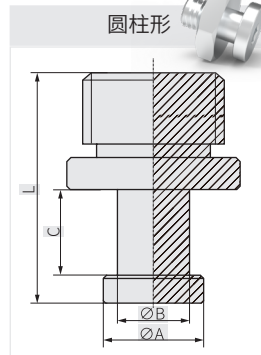
BLN04 - Z ØAØBXC-L - M5 B - S



②接头类型

代码	内容
□	圆柱形
Z	锥形
T	长形

③接头尺寸



④安装尺寸

代码	内容
M3	M3普通机加螺纹
M5	M5普通机加螺纹
G01	G1/8直管螺纹
G02	G1/4直管螺纹

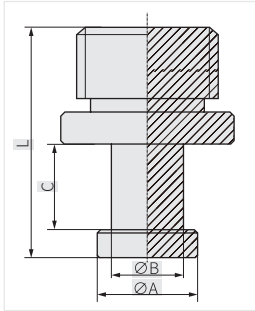
⑤螺纹类型

代码	内容
□	外螺纹
B	内螺纹

⑥材质

代码	内容
S	SUS304
A	铝合金
M	铜镀镍

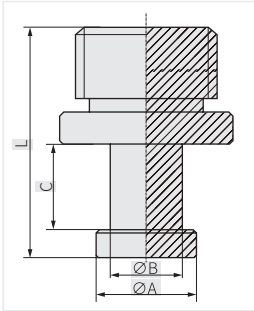
选型参数



圆柱形

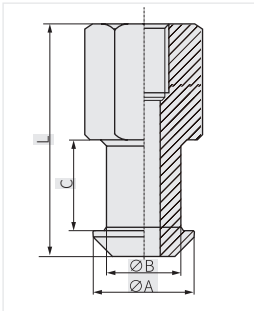
选型编码	φA	φB	C	L	安装方式
BLN04-φ3φ2×1.5-7.5-M3-M	3	2	1.5	7.5	M3
BLN04-φ3.6φ2.5×1.5-8.5-M3-S	3.6	2.5	1.5	8.5	M3
BLN04-φ3φ2×1.5-9.5-M5-S	3	2	1.5	9.5	M5
BLN04-φ3.4φ2.6×2.5-9.5-M5-S	3.4	2.6	2.5	9.5	M5
BLN04-φ3.6φ2.6×3-8-M5-S	3.6	2.6	3	8	M5
BLN04-φ4φ3×2.3-12-M5-S	4	3	2.3	12	M5
BLN04-φ4.1φ3.3×2.3-9.4-M5-S	4.1	3.3	2.3	9.4	M5
BLN04-φ4.5φ3.8×5-13-M5-S	4.5	3.8	5	13	M5
BLN04-φ5φ3×2.1-10-M5-S	5	3	2.1	10	M5
BLN04-φ6φ4×1.3-8.5-M5-S	6	4	1.3	8.5	M5
BLN04-φ6φ4×2-9-M5-S	6	4	2	9	M5
BLN04-φ6φ4×2-10.5-M5-S-01	6	4	2	10.5	M5
BLN04-φ6φ4×2-10-M5-S	6	4	2	10	M5
BLN04-φ6φ4×3-15-M5-S	6	4	3	15	M5
BLN04-φ6.2φ5×1.5-10.3-M5-A	6.2	5	1.5	10.3	M5
BLN04-φ6.2φ5×1.5-10.3-M5-A-01	6.2	5	1.5	10.3	M5
BLN04-φ6.2φ5×1.5-12.8-M5-A	6.2	5	1.5	12.8	M5
BLN04-φ6.2φ5×1.5-10.3-M5-S	6.2	5	1.5	10.3	M5
BLN04-φ6.5φ4×3-12-M5-S	6.5	4	3	12	M5
BLN04-φ7φ5×3-11-M5-S	7	5	3	11	M5
BLN04-φ7φ5×3-12-M5-S	7	5	3	12	M5
BLN04-φ7.8φ5.5×3.5-13-M5-S	7.8	5.5	3.5	13	M5
BLN04-φ7.8φ4.8×1.6-9-M5-S	7.8	4.8	1.6	9	M5
BLN04-φ8φ5×3-9-M5-S	8	5	3	9	M5
BLN04-φ8φ6×5-14-M5-S	8	6	5	14	M5
BLN04-φ10φ7.5×10-22-M5-S	10	7.5	10	22	M5
BLN04-φ11φ8×5.4-15.4-M5-S	11	8	5.4	15.4	M5
BLN04-φ11φ8×6-16-M5-S	11	8	6	16	M5
BLN04-φ11φ6×4.5-14-M5-S	11	6	4.5	14	M5
BLN04-φ12φ10×2-13.1-M5-S	12	10	2	13.1	M5
BLN04-φ12φ10×2-15-M5-S	12	10	2	15	M5
BLN04-φ12φ10×2-15-M5-S-01	12	10	2	15	M5
BLN04-φ12φ10×2-13-M5-S-02	12	10	2	13	M5
BLN04-φ12φ10×2-18.9-M5-S	12	10	2	18.9	M5
BLN04-φ16φ10×2-13.8-M5-S	16	10	2	13.8	M5
BLN04-φ16φ10×1.4-14-M5-L	16	10	1.4	14	M5

选型参数



圆柱形

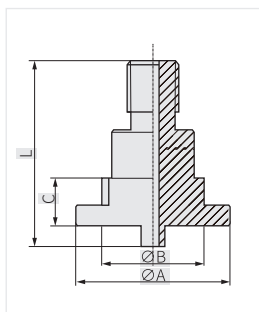
选型编码	φA	φB	C	L	安装方式
BLN04-φ6.2φ5×1.5-13-M5B-A	6.2	5	1.5	13	M5内螺纹
BLN04-φ12φ10×2-22.2-M5B-A	12	10	2	22.2	M5内螺纹
BLN04-φ12φ10×2-16.5-M5B-S	12	10	2	16.5	M5内螺纹
BLN04-φ12φ10×2-21.9-M5B-S	12	10	2	21.9	M5内螺纹
BLN04-φ13φ8×6-22.5-G02-A	13	8	6	22.5	G 1/4"
BLN04-φ11φ8×6-22.5-G01A	11	8	6	22.5	G 1/8"
BLN04-φ13φ8×6-22.5-G01-A	13	8	6	22.5	G 1/8"



锥形

选型编码	φA	φB	C	L	安装方式
BLN04-Zφ3.4φ2.5×3.2-10.5-M3-S	3.4	2.5	3.2	10.5	M3
BLN04-Zφ3.6φ3.2×4.2-14.5-M5-S	3.6	3.2	4.2	14.5	M5
BLN04-Zφ5φ3.8×4.5-14-M5-S	5	3.8	4.5	14	M5
BLN04-Zφ6.5φ4.5×3-11.5-M5-S	6.5	4.5	3	11.5	M5
BLN04-Zφ6.6φ4.5×6.9-19-M5-S	6.6	4.5	6.9	19	M5
BLN04-Zφ6.6φ4.5×6.9-19-M5-S-01	6.6	4.5	6.9	19	M5
BLN04-Zφ6.6φ4.5×6.9-15.5-M5-S	6.6	4.5	6.9	15.5	M5
BLN04-Zφ6.6φ4.5×6.9-19-M5-S	6.6	4.5	6.9	19	M5
BLN04-Zφ6.6φ4.5×6.9-19-M5-M	6.6	4.5	6.9	19	M5
BLN04-Zφ7φ5×2.7-9-M5-S	7	5	2.7	9	M5
BLN04-Zφ8φ6×6.6-18.6-M5-S	8	6	6.6	18.6	M5
BLN04-Zφ8φ7×13.8-22.8-M5-S	8	7	13.8	22.8	M5
BLN04-Zφ8φ6×7-19-M5-M	8	6	7	19	M5
BLN04-Zφ9φ5×3.6-10-M5-S	9	5	3.6	10	M5
BLN04-Zφ10φ6×3.5-10.5-M5-S	10	6	3.5	10.5	M5
BLN04-Zφ11.5φ8×5.3-15.3-M5-S	11.5	8	5.3	15.3	M5
BLN04-Zφ6.5φ4.5×6.9-17-M5B-M	6.5	4.5	6.9	17	M5内螺纹
BLN04-Zφ7φ4.5×6.9-17-M5B-S	7	4.5	6.9	17	M5内螺纹
BLN04-Zφ8φ6×6.6-17.6-M5B-S	8	6	6.6	17.6	M5内螺纹
BLN04-Zφ8φ6×7-18-M5B-S	8	6	7	18	M5内螺纹
BLN04-Zφ8φ6×7-18-M5B-M	8	6	7	18	M5内螺纹
BLN04-Zφ6.6φ4.5×6.9-19-M6-M	6.6	4.5	6.9	19	M6

选型参数



长形

选型编码	φA	φB	C	L	安装方式
BLN04-Tφ5φ3.5×2-9.5-M5-S	5	3	2	9.5	M5